

HYPERION PARAMETRIC TEST SHELL

Chroma created Hyperion to be a tool that leverages and solves the many challenges faced by test engineers in their daily work lives that we and others experience.

The Hyperion Test Shell is derived from decades of experience working as parametric testing professionals in the semiconductor industry. We asked the question: How can we design a better test shell for ourselves and for our customers?

The answer includes easy to use interfaces, a plug-in architecture for customization, advanced algorithm libraries based on standards, and broad support of commonly used test instruments and probers combined with the ability to use the same test plans, test algorithms and output formatting for test cells based on Keysight and Keithley using TEL, EG, Accretech, MPI and other probers.

Hyperion simplifies your parametric test operation reducing time and problems with training, operation, debugging and analysis. At the same time providing a common platform

helps to leverage upgrades and focus on the business and engineering objectives of test.

Unification of Test Cells

Hyperion is an instrument and prober agnostic that uses a common set of general test plans, algorithms, and test parameters that run on all supported test cell hardware.

So if you have a 4062UX test cell on a TEL P8, B1500A test cell on an EG prober and Keithley on an MPI, all can run using interchangeable test plans, test algorithms and test data output formats to reduce test development effort.

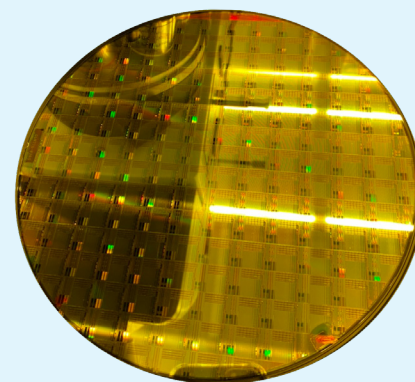
The support of many instruments gives an upgrade path that is incremental and affordable based on your budgets and time frames.

Hyperion provides a single platform that is easy to learn and allows you to focus on what matters: conducting tests and obtaining data to make decisions quickly.

Hyperion

KEY FEATURES

- Unification of Test Cells and Test Shell
- Flexible Virtual Instrument Layer
- Popular MS Visual Studio C++ IDE
- Write-Once Algorithm
- Powerful "Plug-In" Architecture
- User Friendly GUI & Off-Line SPICE model
- Easy to Use & Learn



Chroma in-house 8" Test Wafer
(TSMC 0.18um)

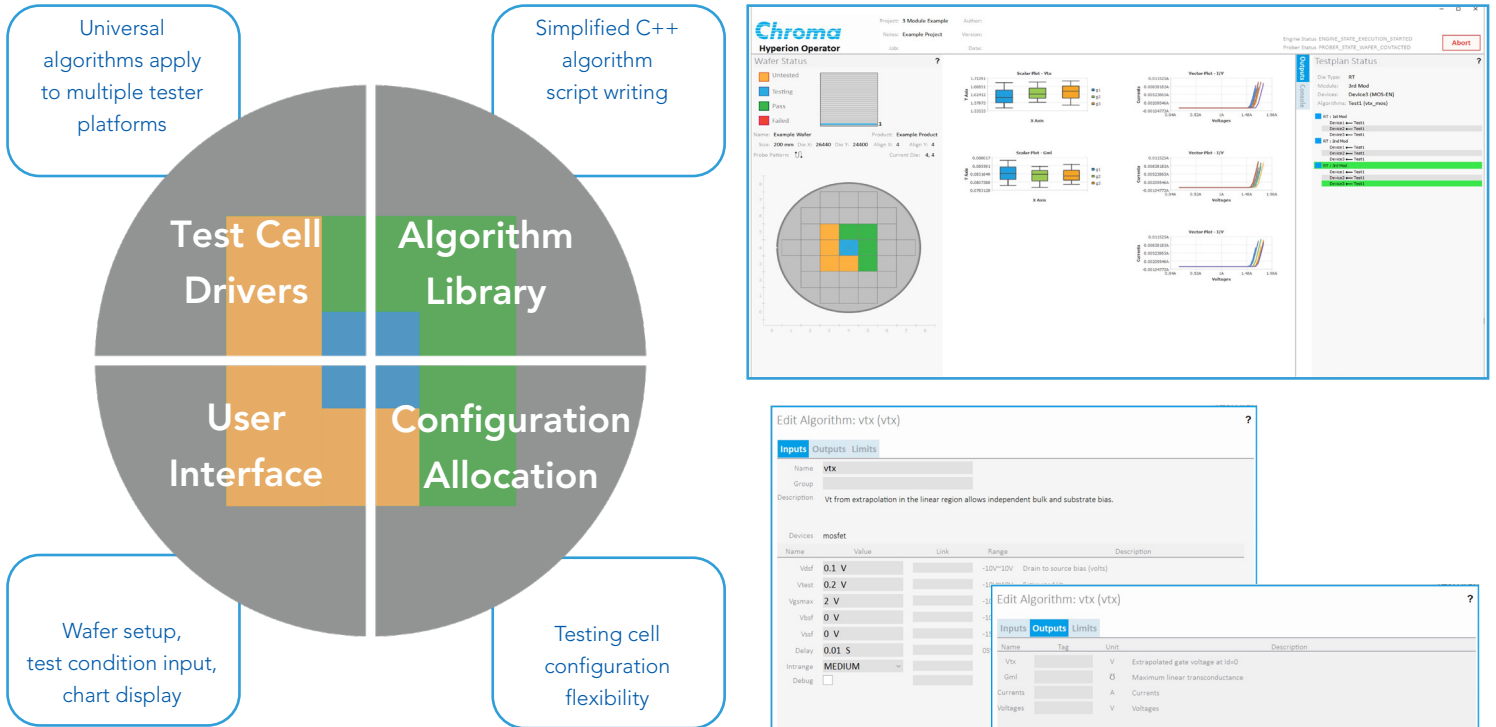


WRITE-ONCE ALGORITHMS

Hyperion test algorithms are universal and written in a C++. If you've written C algorithms on other platforms, you can already write them on Hyperion.

Algorithm input and output parameters are entirely defined self-contained within the code without the need to define other files or even use the Test Shell. We provide GUI-based starting point as well.

Algorithm definition includes both scalar and vector parameters which are automatically handled by output formatting plug-ins.



POWERFUL "PLUG-IN" ARCHITECTURE

- Plug-In Customization
- C++ Algorithm Plug-Ins
- C++ Output Data Plug-Ins
- Standard-Based Chroma Algorithms
- Test Plan Importing
- Consulting Service Available

SUPPORTED INSTRUMENTS

HP/Agilent/Keysight 4062C/UX, 4142B, 4085A/B, E5260
B1500A/B, E5250A

Keithley/Tektronix 2400/2410, 2600, 707A/B

SUPPORTED PROBERS

Tokyo Electron TEL P8, 8XL, P12, Precio

ElectroGlas EG 4080/4090

Accrettech UF200/300, UF2000/3000

MPI Sention Family

COMPUTER CONFIGURATION REQUIREMENT

Intel i7 Processor, 2016 or Newer, 16GB RAM, 500GB or more Hard Disk, 1920 x 1080 Monitor, Microsoft Windows 10
National Instrument GPIB - Either USB-to-GPIB or PCIe GPIB

Note: A complete and supported PC can be purchased with Hyperion to minimize any issue with hardware.

GLOBAL HEADQUARTERS

TAIWAN
CHROMA ATE INC.
88 Wenmao Rd, Guishan Dist.,
Taoyuan City, 333001, Taiwan
T +886-3-327-9999
F +886-3-327-8898
www.chromaate.com
info@chromaate.com

USA
CHROMA ATE INC.
7 Chrysler
Irvine, CA 92618, USA
T +1-949-421-0355
F +1-949-421-0353
www.chromaau.com
info@chromaus.com

EUROPE
CHROMA ATE EUROPE B.V.
Morsestraat 32, 6716 AH Ede,
The Netherlands
T +31-318-648282
F +31-318-648288
www.chroma.eu.com
sales@chromaeu.com

JAPAN
CHROMA JAPAN CORP.
472 Nippa-cho, Kouhoku-ku,
Yokohama-shi, Kanagawa, 223-
0057, Japan
T +81-45-542-1118
F +81-45-542-1080
www.chroma.co.jp
info@chroma.co.jp

KOREA
CHROMA ATE KOREA BRANCH
3F Richtogether Center, 14,
Pangyoyeok-ro 192
Bundang-gu, Seongnam-si,
Gyeonggi-do, 13524, Korea
T +82-31-781-1025
F +82-31-8017-6614
www.chromaate.co.kr
info@chromaate.com

CHINA
CHROMA ATE (SUZHOU) CO., LTD.
Building 7, ShiShan Industrial Gallery
No. 855, Zhu Jiang Rd.,
Suzhou New District,
Jiang Su, China
T +86-512-6824-5424
F +86-512-6824-0732
info@chromaate.com